



CORPORATE PROFILE

2025

Alinamin Pharmaceutical Co., Ltd.



Corporate Message

Innovating GENKI for Tomorrow

"Innovating GENKI for tomorrow" serves as the guiding principle for Alinamin Pharmaceutical Company Group. It demonstrates our commitment to continually pursue value by providing GENKI* to users through our products. The phrase "tomorrow" signifies not only supporting current well-being but also creating a healthier future. The term "innovating" indicates our intention to take action together to create a GENKI future. The Alinamin Pharmaceutical Company Group will work together as one to realize this slogan.

We continue to evolve and take on new challenges guided by our mission — to support people’s health by providing excellent, high-quality products and services and trustworthy information.

*GENKI in English can be understood as "vitality" or simply "energy" — it represents a state of physical and mental well-being.

Corporate Symbol

Our corporate symbol expresses two significant concepts: our future-focused development and the maintenance of our existing principles.

Future-focused development : a renewed future-oriented approach and spirit to take on challenges.

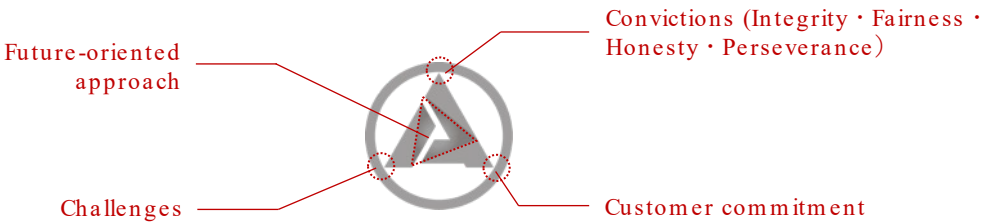
Maintaining existing principles: a steadfast commitment to our convictions (Integrity, Fairness, Honesty and Perseverance) and to our customers.

The three points of the triangle represent our challenges, convictions, and customer commitment. The triangle in the center of the Alinamin Pharmaceutical ‘A’ represents our future-oriented approach.

The corporate symbol embodies the promise from our company to all stakeholders, beginning with our customers.



- Symbolizes the ‘A’ of Alinamin Pharmaceutical
- Embodies the promise we make to our stakeholders
- The white pathway represents our commitment to mutual trust



MISSION, VISION, VALUES

MISSION

To support people's health by providing excellent, high-quality products and services and trustworthy information

VISION

To become a leading consumer healthcare company through the swift creation of new value and an agile response to the diverse healthcare needs of our customers

VALUES

Putting Consumers First

Our mission to support people's health is a source of pride and pleasure. We aim to build genuine trust with our stakeholders and society through ensuring product quality and safety and thoughtful actions that satisfy expectations.

Lasting Integrity

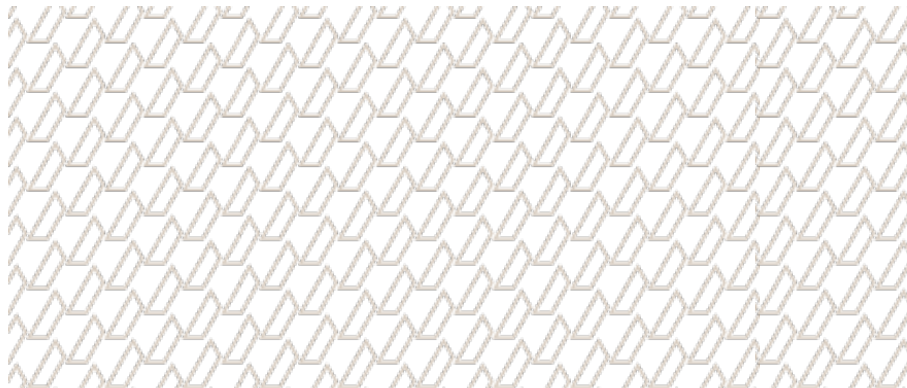
Integrity is at the foundation of everything we do. We maintain high ethical standards and compliance and act fairly and honestly even when facing the most demanding challenges.

Enjoying the Challenge

We are empowered to shape the future. We can affect and create change through continuous learning and growth, an agile mindset and finding enjoyment in the challenges we face.

Valuing People

We treat everyone with respect and embrace diverse values. We aim to build a work environment that maximizes the potential of each individual, where we can create new value through teamwork and positive competition.



Company Facts

Company Name	Offices
Alinamin Pharmaceutical Co., Ltd.	Total of eight offices
President	Fiscal Year-End
Atsushi Morisawa	March 31
Business Started	Scope of Business
April 1, 2017	Research & development, manufacturing, sales and marketing of over-the-counter products, quasi-drugs, etc.
Capital	Head Office
50 million yen	Tekko Building 23F, 8-2 Marunouchi 1-chome, Chiyoda-ku, Tokyo, 100-0005, Japan



Offices

Head Office

Tekko Building 23F,
8-2 Marunouchi 1-chome, Chiyoda-ku,
Tokyo, 100-0005
TEL: +81-3-6212-8501 FAX: +81-3-6212-8695

Osaka Office

Takeda Midosuji Building,
1-1 Doshomachi 4-chome, Chuo-ku,
Osaka-shi, Osaka, 541-0045

Sapporo Office

FWD Sapporo Building 9F,
4 Kitaichijo-Nishi 13-chome, Chuo-ku,
Sapporo-shi, Hokkaido, 060-0001

Sendai Office

Kajima Jozenji Building 5F,
18-21 Honcho 2-chome, Aoba-ku,
Sendai-shi, Miyagi, 980-0014

Nagoya Office

Nagoya Center Building 7F,
2-13 Nishiki 2-chome, Naka-ku,
Nagoya-shi, Aichi, 460-0003

Hiroshima Office

Building Heiwa Odori Komachi 2F,
1-25 Komachi, Naka-ku,
Hiroshima-shi, Hiroshima, 730-0041

Fukuoka Office

Fukuoka Showa-dori Building 4F,
9-12 Shimokawabatamachi, Hakata-ku,
Fukuoka-shi, Fukuoka, 812-0027

Juso CMC Center

17-85 Jusohonmachi, 2-chome, Yodogawa-ku,
Osaka-shi, Osaka, 532-0024



Group Companies

Alinamin Pharma Tech Co., Ltd.

Alinamin Pharma Tech Co., Ltd. was established in 1980 as the leading manufacturer of OTC drugs marketed by Alinamin Pharmaceutical Co., Ltd.

Address: 2-21 Osadano-cho, Fukuchiyama-shi, Kyoto, 620-0853, Japan

日本製薬株式会社 NIHON PHARMACEUTICAL CO.,LTD.

NIHON PHARMACEUTICAL CO., LTD. has been subsidiary of Alinamin Pharmaceutical since July 2024. That company is the main manufacturer of drinks and other products marketed by Alinamin Pharmaceutical Co., Ltd.

Address: 26 Sumiyoshi-cho, Izumisano-shi, Osaka, 598-8558, Japan

yuuka Yuuka Co., Ltd.

Yuuka Co., Ltd. has been a subsidiary of Alinamin Pharmaceutical since November 2022. The company sells facial cleansers such as Green tea soap (Yuuka soap) and various skin care products made from Green tea through a D2C business model.

Address: 5-11-17 Mikasagawa, Onojo-shi, Fukuoka, 816-0912, Japan

Alinamin Pharmaceutical Taiwan Ltd.

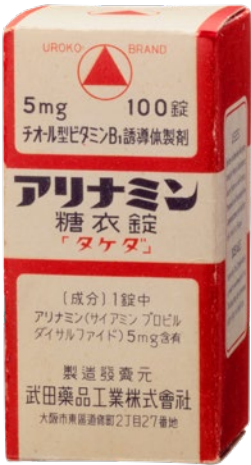
As our Taiwanese subsidiary company, Alinamin Pharmaceutical Taiwan commenced operations on April 1, 2022, selling products such as Alinamin EX Plus (local name: 合利他命® 強效錠).

Address: 3F, No.39, Sec.2, Dunhua South Road, Daan Dist., Taipei City, 10683, Taiwan (R.O.C)



History

1954	“Alinamin®” launched as Japan's first vitamin B ₁ derivative
1955	General cold drug “Benza®” launched
1973	Launched "Takeda Kampo Benpiyaku"
1980	Fukuchiyama Takeda Corporation established as the main OTC drug manufacturing company.
1987	“Alinamin® V” drink launched
1994	"Fukuchiyama Takeda Corporation" changed its name to “Takeda Healthcare Products Co., Ltd.”
2014	Launched "Midori no shukan," a dietary supplement containing euglena (Japanese name: Midori no Habit)
2017	Takeda Consumer Healthcare, Inc. begins operations as a wholly-owned subsidiary of Takeda Pharmaceutical Company Limited.
2019	Aluminum pouch drink “Alinamin® Medical Balance” launched
2021	Acquired by the Blackstone Group Inc. and its affiliates. The capital relationship with Takeda Pharmaceutical Company Limited was terminated and the company’s name changed to Alinamin Pharmaceutical Co. Ltd.
2022	Acquisition of all shares of Yuka Holdings Co., Ltd (now Yuuka Co., Ltd).
2024	Acquisition of all shares of NIHON PHARMACEUTICAL CO., LTD.
	The Blackstone Group Inc., the sole shareholder, and its affiliates entered into a share transfer agreement with MBK Partners, and the transfer was completed within the year.



First-generation ALINAMIN sugar-coated tablets

*This product is discontinued

Building a great place to work

Promoting Diversity

Alinamin Pharmaceutical Co., Ltd. is made up of diverse employees who work with a sense of purpose to realize the company's vision. We believe in providing our employees with opportunities for growth, and allowing them to fulfill their potential and feel passionate

about their careers, regardless of age, gender, work style, or nationality. As a company committed to helping people enjoy healthy lives, we actively promote flexible approaches to work and strive to create an environment where employees can have a good work-life balance and live rich, healthy lives themselves.

Our workforce as of 2024

Item	Status
Percentage of female employees	28.0% (permanent staff)
Average number of years at the company	Female: 18.0 years, Male: 16.0 years (permanent staff)
Percentage of section heads who are female	23.0%
Action being taken to solve the problem of long working hours	<ul style="list-style-type: none">• Setting goals for the rate of annual paid holiday taken and total hours worked• Promoting flexible working styles (flextime, working from home)
Average hours of overtime per month (permanent staff)	14.8 hours
Rate of annual paid holidays taken (permanent staff)	65.8%
Use of flexible work systems	Flex time system: 99.4% Remote work system: 98.4%



Our Products



Alinamin Medical Balance
Pouch Type



Alinamin Night Recover
Bottle Type



Alinamin V
Bottle Type



Alinamin A
Vitamin



Alinamin EX PLUS
Vitamin



Alinamin EX PLUS α
Vitamin



Alinamin Medical Gold
Vitamin



BENZA BLOCK S
PREMIUM DX
Cold Remedy



BENZA BLOCK L
PREMIUM DX
Cold Remedy



BENZA BLOCK IP
PREMIUM DX
Cold Remedy



BENZA BLOCK T
PREMIUM DX
Cold Remedy



TAKEPRON S
Proton Pump Inhibitor (PPI)



Bio-Three Hi Tablet
Intestinal Regulation Drug



DAICHI NO KAMPO BENPIYAKU
Laxative



HICEE 1000
Vitamin



Vitamin C 「2000」
Vitamin



Actage HK Capsule
Vitamin



Melano White
Vitamin



ANETON SEKIDOME JO
Cough Medicine



TYLENOL A
Pain Reliever/Fever Reducer

Our Major Business Partners and Products

Kenvue
(JNTL Consumer Health K.K.)

Nicorette series (stop smoking aid)
Aneton series (antitussives and expectorants, rhinitis medicine)
Terra-cortril NANKO a (dermatological medicine)
Terramycin NANKO a (dermatological medicine)
Tylenol A (antipyretic analgesic)



Alinamin Pharmaceutical Co., Ltd.

Tekko Building 23F,
8-2 Marunouchi 1-chome, Chiyoda-ku,
Tokyo, 100-0005, Japan
TEL: +81-3-6212-8501
FAX: +81-3-6212-8695
www.alinamin-pharma.co.jp/en/

As of October 2025



Alinamin Pharmaceutical Co., Ltd.